



# POWERING THE WORLD

**Your global partner for power, industrial, supply chain & engineering solutions.**



**P R I S M E C S<sup>®</sup>**

[www.prismecs.com](http://www.prismecs.com)

# WHERE EPC IS DRIVEN BY INTEGRITY

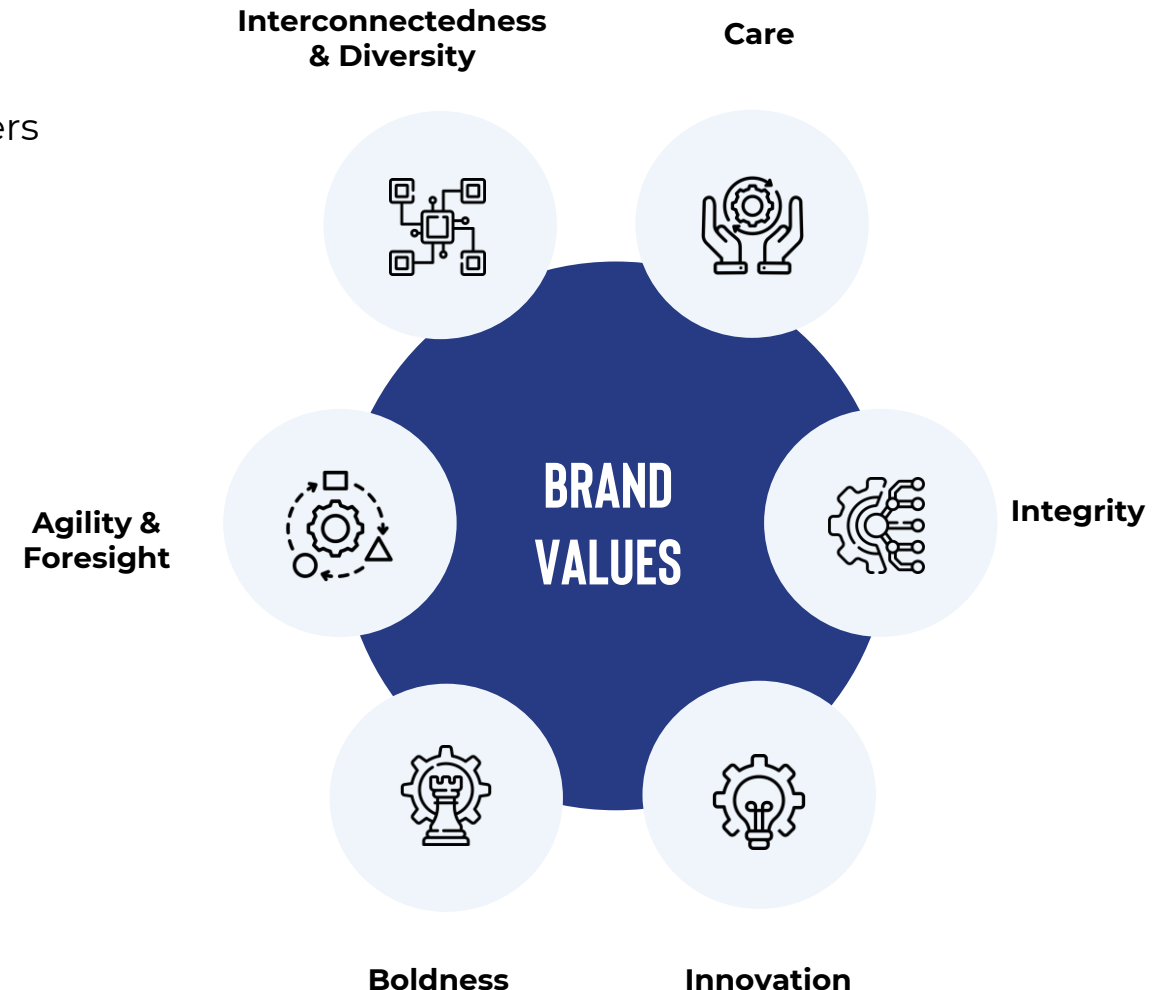
**Prismecs** is the power leader in turnkey energy and industrial services solutions for industrial businesses and organizations within the oil & gas, power, energy, and telecom sectors. The company offers comprehensive and innovative **Engineering, Procurement, and Construction (EPC) solutions**, reliable **Operations & Maintenance (O&M) solutions**, and cutting-edge technology services.

## VISION

Prismecs aims to drive industrial innovation through the integration of diverse power expertise and technology, contributing to a smarter, interconnected global community.

## MISSION

Utilizing diverse expertise and technology for innovative local and global solutions, we foster interconnectedness and knowledge sharing to turn potential into success.



# OUR EXPERTISE AND DIVERSE OFFERINGS

Prismecs is a dedicated project partner for efficiently managing and optimizing operations, currently delivering a robust suite of services in **15+ countries** across five continents. Prismecs strengthens access to industrial markets from project inception to product delivery and personnel support by delivering integrated, turnkey solutions for the world's toughest operations.



## SERVICES OFFERED

Prismecs leads with cutting-edge technology and expert insights, delivering impactful, customized solutions to revolutionize performance in the evolving industrial landscape



**EPC  
SERVICES**



**SUPPLY CHAIN  
SOLUTIONS**



**O&M  
SERVICES**



**TECHNOLOGY  
SOLUTIONS**



**I&C  
SERVICES**



**SOFTWARE  
SOLUTIONS**



**CONSULTING  
SERVICES**



**DISTRIBUTED  
ENERGY SOLUTIONS**



# TURNKEY ENERGY SOLUTIONS FOR HIGH-POWER DEMAND SEGMENTS



## POWER GENERATION

### Experience Turnkey Power

From design and engineering through supply chain, commissioning and MRO, our team delivers the full package - no matter your power requirements. We secure the parts. We engineer the solution. Then, we install, commission and maintain it.



## DATA CENTER

### Data Center Excellence

Prismecs provides sustainable, onsite, resilient, fuel flexible power generation to ensure data center operators can meet rapidly increasing power demands.



## OIL AND GAS

### Unlock Peak Productivity

There's no part too small or reservoir too complex for our energy product and supply chain specialists. From Angola to the Permian Basin, PRISMECS is enabling smarter operations in every petroleum play.



## COMMERCIAL & INDUSTRIAL

### EPC Precision. Industrial Performance

From concept to operations, Prismecs is your single accountable partner uniting project delivery and lifecycle support with execution and resilient supply chains to de-risk schedules, ensure clean start-ups, and maximize uptime.

# EXTENDING EXPERTISE INTO EMERGING GROWTH SEGMENTS



## METALS AND MINING

### Extract More Profit

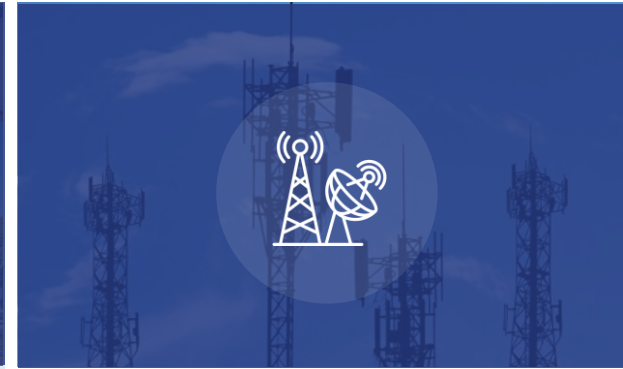
Processing. Crushing. Clinkerization. Grinding. PRISMECS streamlines every step from mining to packing to turn bottlenecks into higher throughput and maximum uptime.



## HEALTHCARE

### Clinical-Grade Reliability

Prismecs keeps life-critical equipment online 24/7 with resilient power, and controls. We integrate redundant architectures UPS, backup generation and standards-compliant monitoring so patient care never pauses.



## TELECOMMUNICATION

### Comprehensive Telecommunications Solutions

Prismecs optimizes primary and backup power generation for cell sites of any size with a focus on delivering more sustainable technology & greener fuel sources.



## E-MOBILITY

### Innovative E-Mobility Charging Solutions

Prismecs provides fuel flexible, sustainable power generation solutions that can eliminate grid dependency, or supplement your existing grid connection and avoid high demand charges using cleaner fuel technologies.

# EXPERTISE WITHOUT BOUNDARIES



HQ & REGIONAL OFFICES

04

COUNTRIES

15+

PROJECTS DELIVERED

1,500+ MW

ACTIVE PROJECTS

6

Taiwan  
Oman  
Switzerland  
Bahamas  
Greece  
Angola

ACTIVE PROSPECTS

Atoka, Oklahoma  
Central Texas  
Atlanta Georgia  
Central New Mexico



# TELECOMMUNICATIONS



## MASSIVE OPPORTUNITY

Addressable market is over 500,000 cell sites globally across all Tier-1 and Tier-2 cellular and tower operators



## BROAD INDUSTRY PARTICIPATION

Collaboration opportunities with major telecom infrastructure, power generation, and battery storage OEM's



## POWER INFRASTRUCTURE CHALLENGES

Existing site deployments include inefficient lead acid batteries, diesel generators, and expensive peak demand charges from local utilities



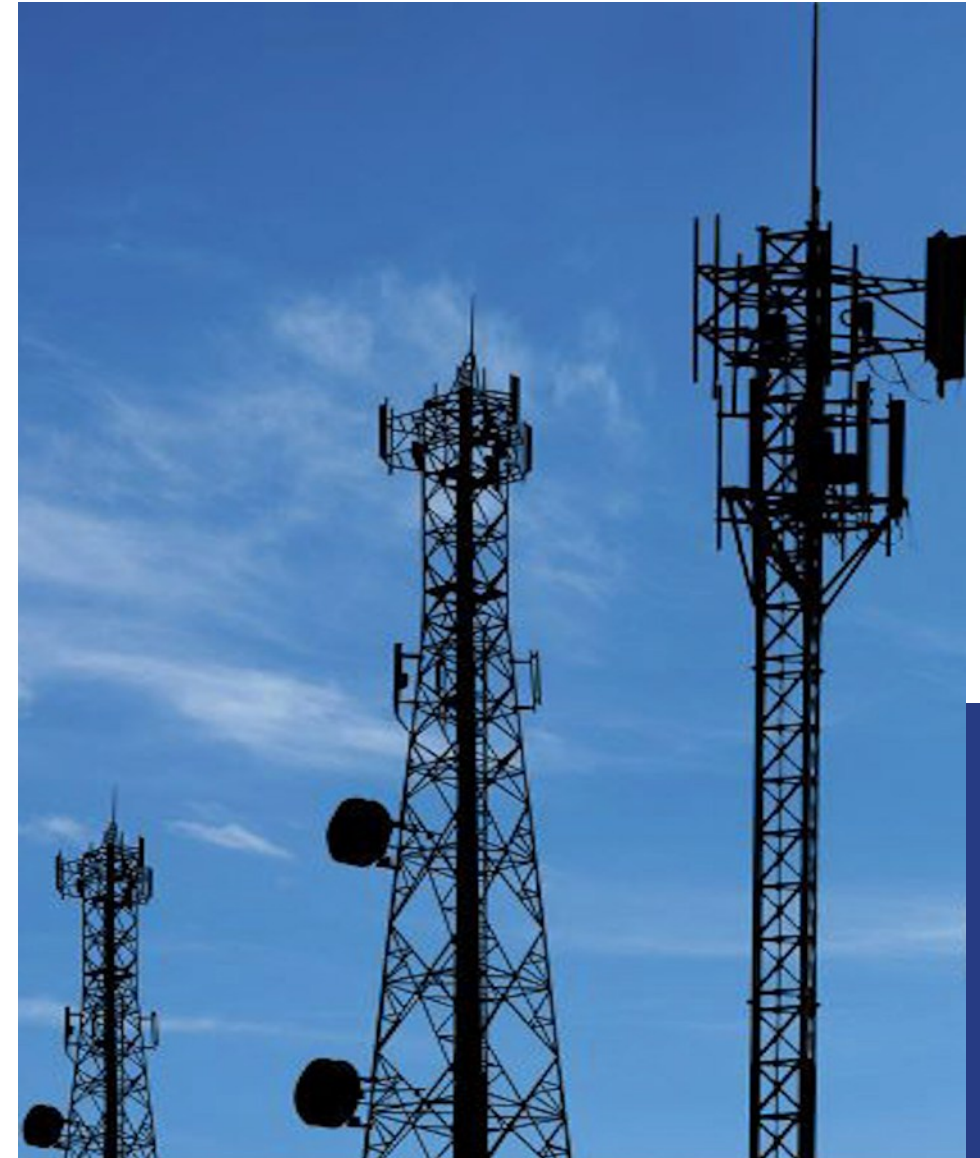
## INNOVATIVE POWER SOLUTIONS

Deploy resilient, fuel flexible, sustainable power generation and innovative battery storage technologies to replace current, outdated infrastructure.



## COST SAVINGS

Compare existing site TCO and current environmental impact to a more cost efficient, sustainable solution that delivers substantial energy savings.



# E-MOBILITY



## HIGH-POWER CHARGING (HPC)

With 4-8 stations and charging speeds ranging from 150kW to 350kW each, EV charging sites are stressing the power limited grid and accelerating demand for alternative high-power solutions.



## UTILITY UPGRADE CHALLENGES

Many sites don't have the available electrical infrastructure or capacity to support HPC and need expensive, time-consuming utility upgrades..



## PEAK DEMAND COSTS

High-power charging incurs additional, unpredictable demand charges that can significantly increase electric bills.



## LIMITATIONS BECOME OPPORTUNITY

New technology offers infrastructure ready, fuel flexible, sustainable power generation to supplement existing grid connections, or eliminate grid dependency altogether, to deliver abundant local power, resilience, and cost savings.





# DATA CENTER



## DATA CENTER POWER

“Always on” connectivity, hyperscale capacity and explosive growth from AI, ML & cloud computing demands make sustainable, cost effective and reliable power generation more important than ever.



## OPERATIONAL RELIABILITY

Avoid or eliminate grid constraints while improving operational reliability and continuity. Modernize electrical resiliency to ensure critical operations stay online.



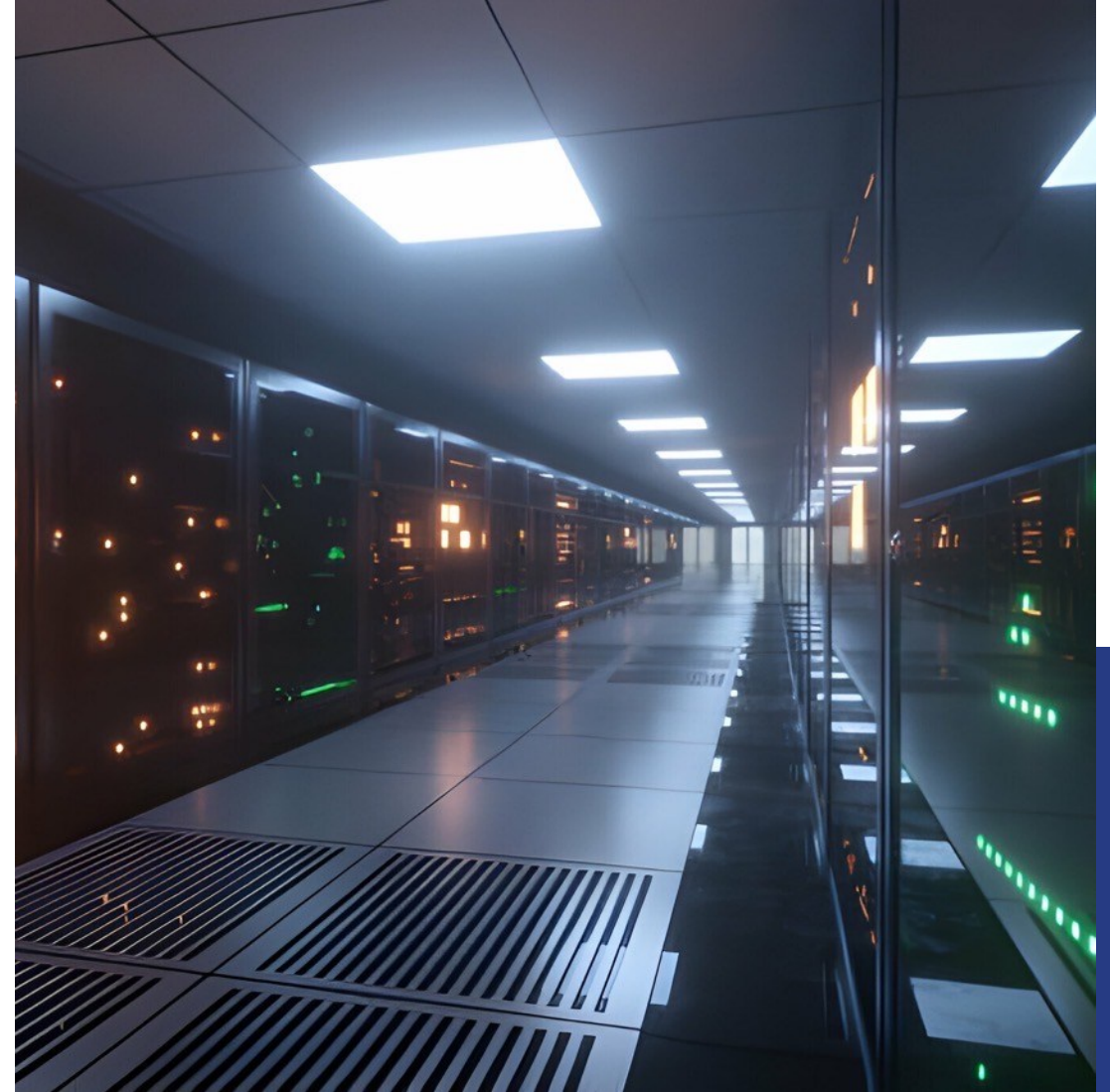
## FLEXIBLE POWER GENERATION

Implement scalable, fuel-flexible, easy to permit, install, and interconnect power generation. Run prime or backup power (or switch between modes) and migrate to zero carbon fuels like hydrogen as they come online.



## SUSTAINABLE RESILIENCE

Significantly reduce or eliminate emissions-based runtime restrictions, reduce NOx emissions, and integrate BESS to provide 7x24x365 carbon-free energy.



# LGEN POWER GENERATION

Local, scalable, fuel-flexible (including HYDROGEN) power for commercial and industrial customers, biogas developers, utilities, municipalities, and datacenters



- **Easy, Modular Installation**
- **High Availability & Low Maintenance**
- **Up to 25 MW per Acre Scalability**

Breakthrough design combines the high efficiency and low emissions of fuel cells with the affordability and dispatch ability of traditional combustion engines and micro-turbines.



## High Efficiency

Direct conversion of linear motion into electricity



## Near-Zero NOx

Low-temperature, non-combustion motion into electricity reaction without a flame or burning



## Permitting Anywhere

Meets any air permitting requirements in the US



## Fully Dispatchable

Continuous, adaptive control without mechanical constraints



## Fuel Flexibility

Load-tracking, fast on/off, black without mechanical constraints start, and islanding



## Controllable & Configurable

Integrates seamlessly with site components & requirements



# MUNICIPALITIES

## LANDFILL WASTE-TO-FUEL



ENERGY



WATER



WASTE



SPACE



TIME



# MUNICIPALITIES

## LANDFILL WASTE-TO-FUEL



### INNOVATIVE ENERGY SOLUTIONS

Harnesses advanced energy solutions to set new standards for efficiency and innovation in renewable energy.



### RENEWABLE INTEGRATION

Our strategy includes a strong commitment to integrating renewable energy sources, enhancing the sustainability profile of our projects.



### EFFICIENCY AND RELIABILITY

We focus on delivering solutions that promise both efficiency and reliability, which are crucial to municipalities.



### EVOLUTION TO POWER GENERATION SOLUTION

Prismecs leverages industry-leading technologies and practices to enhance your service capabilities.

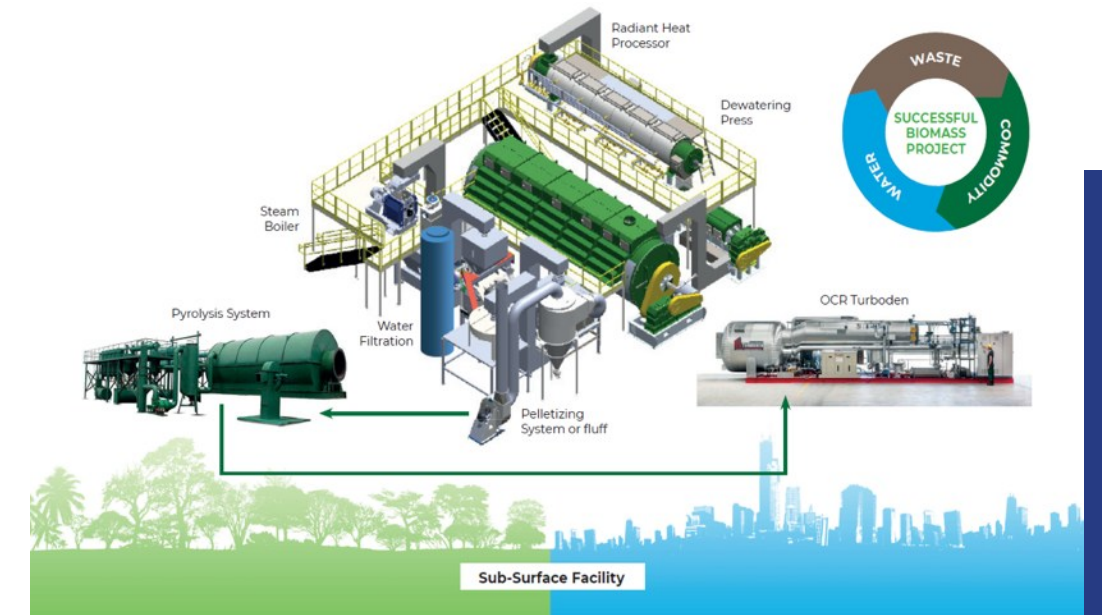
### ELIMINATE WASTE (MSW)

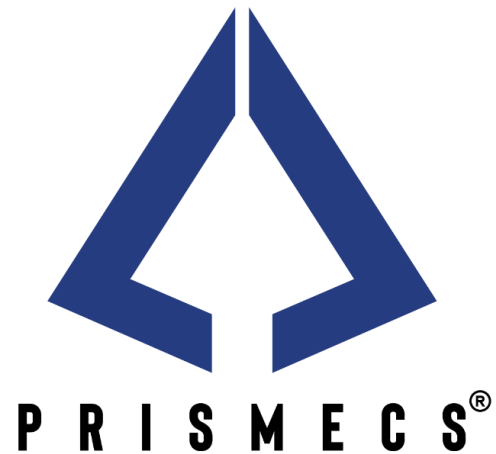
- Municipal Solid Waste (MSW)
- Landfill methane from organics
- GHG from fuel extraction
- GHG from MSW processing
- Non-processable plastics, tires
- Landscape blight and odor



### CREATE FUEL (MSF)

- Municipal Solid Fuel (MSF)
- Renewable fuel for energy generation
- Nutrient-rich soil amendment
- Near potable water
- Liquid & gas biofuels
- Sub-surface, land-use asset





# POWERING THE WORLD

With strategic locations and partners around the globe, Prismecs is ready to deliver the supply chain and engineered solutions services you need—no matter your operating environment.

**+1 (888) 774 7632 | [www.prismecs.com](http://www.prismecs.com)**

APPENDIX

# PROJECT PORTFOLIO



EUROPE

# BIRR THERMAL POWER PLANT

## Location:

Birr, Switzerland



## Project:

250 MW thermal power plant facility

PRISMECS was awarded a multi-year operations and maintenance (O&M) contract for a power project in Birr, Switzerland. This marks the first thermal power plant installation in the country since World War II. The project includes eight mobile gas turbines with a total capacity of 250MW, operating on dual fuel.



Switzerland

## OUR SERVICES

- O&M contract administration and oversight
- Construction management and oversight
- Installation, testing, commissioning and O&M services
- Engineer-procure-construct (EPC) specification preparation



EUROPE

# KOS GREECE

## Location:

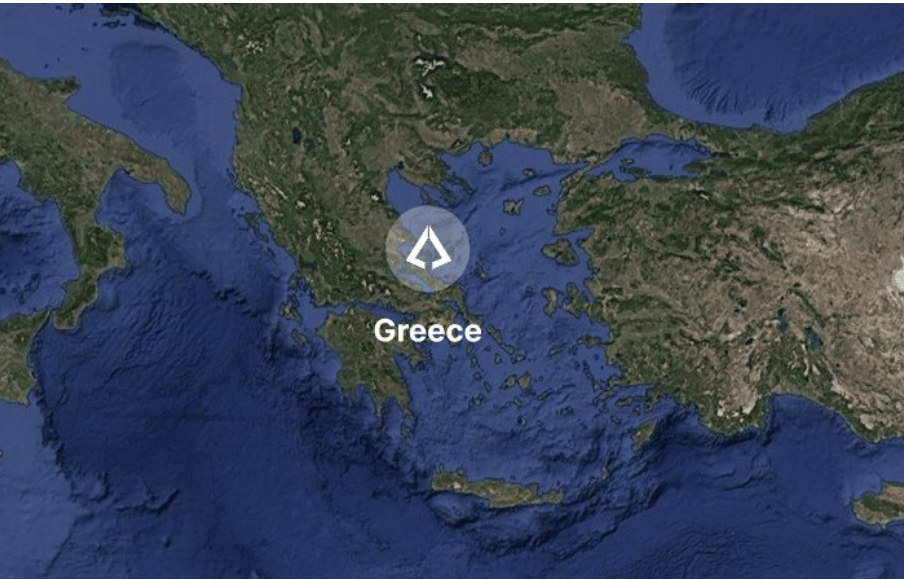
KOS Greece



## Project:

32MW Kos Power Plant

PRISMECS deployed a specialized gas turbine generator (GTG) O&M team leader during the peak summer season in Kos to support a critical power project. Due to the project's success, PRISMECS was requested to return for the following year's summer season. The setup included one mobile gas turbine unit (TM2500+ Gen8), a power control module (PCM), and a Parker liquid fuel filtration system.



## OUR SERVICES

- Troubleshoot & Commissioned Water Wash System
- OSM Installation & Commissioning
- Troubleshooting and solved oil leak enclosure issue and Safety SOPs.
- Performed training to Terna local operators
- Implemented New Operation



EUROPE

# LM6000 RELOCATION & COMMISSIONING

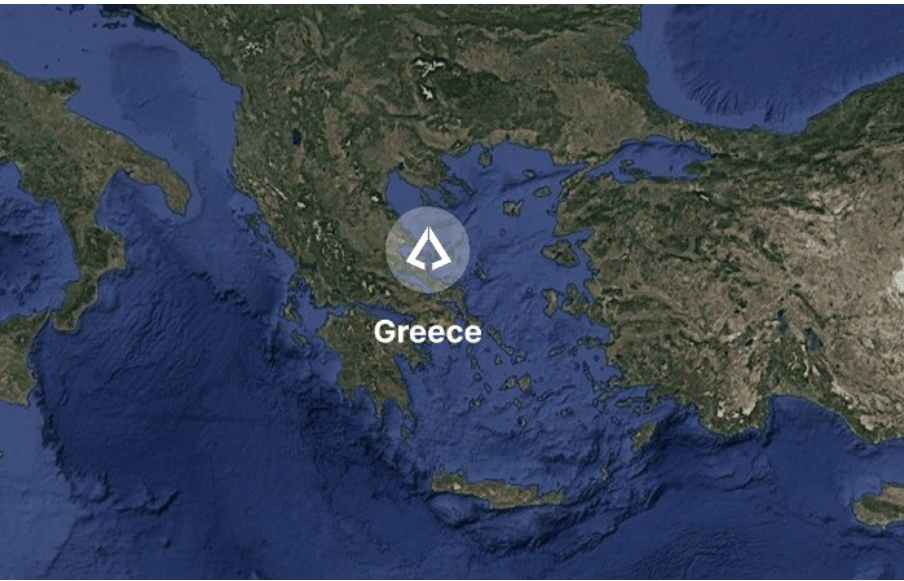
## Location:

Crete, Greece 

## Project:

150MW LM6000PC Liquid-Fuel Turbines

Prismecs installed and commissioned three LM6000PC liquid-fuel turbines, adding 150 MW of fast-start capacity. The units provided Crete with flexible reserve power



## OUR SERVICES

- Decommissioning
- Installation and Recommissioning
- Includes 3 LM6000.



EUROPE

# TM2500 LIQUID-FUEL TURBINES

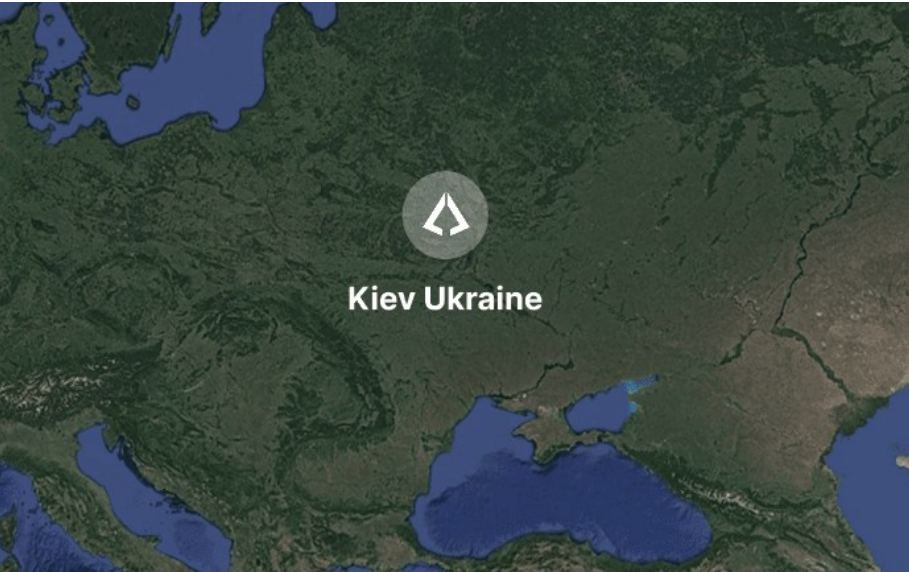
## Location:

Kiev Ukraine 

## Project:

32 MW TM2500 Liquid-Fuel Turbines

PRISMECS was awarded an operations and maintenance (O&M) contract for a project in Kyiv, Ukraine, in collaboration with U.S.-based stakeholders.



## OUR SERVICES

- Training local operators
- Testing and Commissioning
- O&M services
- 2 Mechanical TAs were provided on site



BAHAMAS

# BIMINI POWER PLANT

**Location:** Bimini, Bahamas 🇧🇸

**Project:**

PRISMECS provided an array of EPC services to deliver the main source of reliable power in North Bimini Island.



## OUR SERVICES

- Full O&M support with specialized manpower
- Delivery of 24/7 dispatched uninterrupted power that serves as the main reliable power source for North Bimini Island
- Diverse specialists from five nationalities



NORTH AMERICA

# DC COUPLED SOLAR AND BESS RETROFIT

**Location:**

California, USA



**Project:**

80MW front of the meter PV plant

**Size:**

113.6MW dc / 80MW ac



California, USA

PRISMECS developed a PV model using PV syst for array sizing and prepared PSS/e and PSCAD models for the utility's impact analysis at the POI. Our experts reviewed the EPC's plant engineering designs, prepared the DC and AC arc flash report, developed plant testing procedures and led interconnection testing.

## OUR SERVICES

- Engineering
- Procurement construction
- Startup and commissioning



NORTH AMERICA

# PV OVERLOAD LOSS HARVESTING

**Location:**

New York, USA

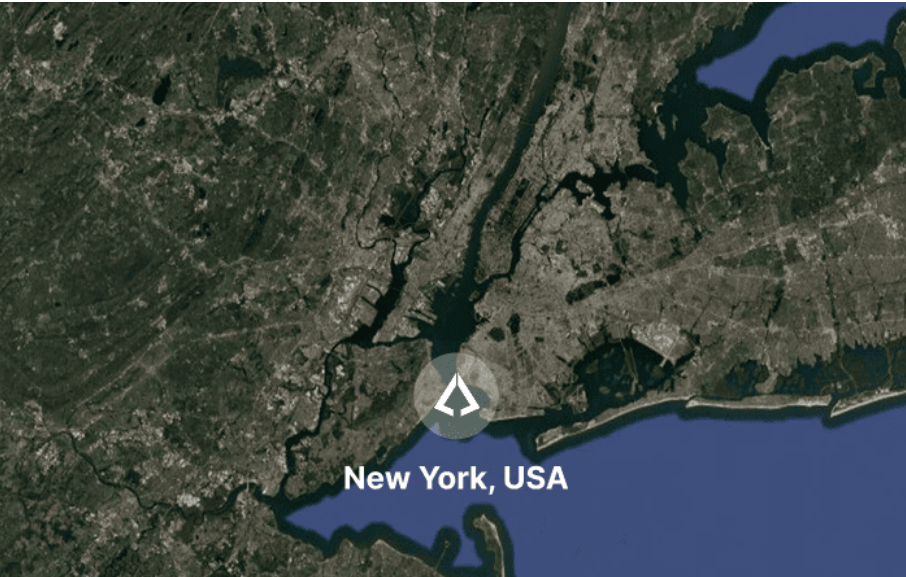


**Project:**

28MWh BESS to capture overload loss in existing PV plant

**Size:**

7MW / 28 MWh



New York, USA

PRISMECS first developed a PV model to quantify the extent of the overload loss. Based on our PV syst model, we sized a BESS that would capture PV overload loss. We also played a key role in the design review and BESS vendor selection.

## OUR SERVICES

- Engineering
- Procurement construction
- Startup and commissioning



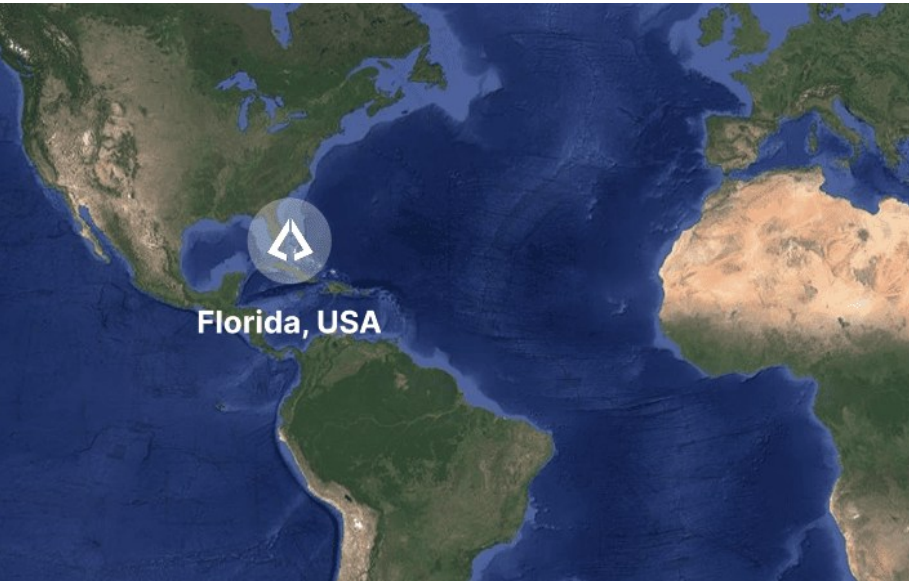
NORTH AMERICA

# DC COUPLED SOLAR AND BESS RETROFIT

**Location:**   
Florida, USA

**Project:**  
16MWh BESS retrofit into existing solar  
Inverters

**Size:**  
4MW / 16 MWh



PRISMECS developed the control philosophy for the integrated operation of BESS, PV inverter and solar string power optimizers. Our experts spearheaded the electrical engineering design to fully integrate BESS hardware into the inverter's DC link. We also designed the BESS cable protection, completed a DC arc flash study for the PV and BESS, and performed testing of the integrated system.

## OUR SERVICES

- Engineering
- Procurement construction
- Startup and commissioning



MEXICO

# 105MW HERRADURA POWER PLANT

**Location:** Mexico 

## **Project:**

PRISMECS provided an array of EPC services to deliver the main source of reliable power in Mexico.

## **Equipment:**

3 x TM2500 + G4 gas turbines




## OUR SERVICES

- Full O&M support with specialized manpower
- Delivery of 24/7 dispatched uninterrupted power that serves as the main reliable power source for the project
- Diverse specialists from various nationalities



PUERTO RICO

# 96 MW PUERTO RICO POWER PLANT

**Location:** Puerto Rico 

## **Project:**

PRISMECS provided an array of EPC services to deliver the main source of reliable power in Puerto Rico.

## **Equipment:**

3 x TM2500 + G8 gas turbines



## OUR SERVICES

- Engineer-procure-construct (EPC) specification preparation
- Installation and Commissioning
- Installation, testing, commissioning and O&M services



ASIA

# TAIWAN PROJECT

## Location:

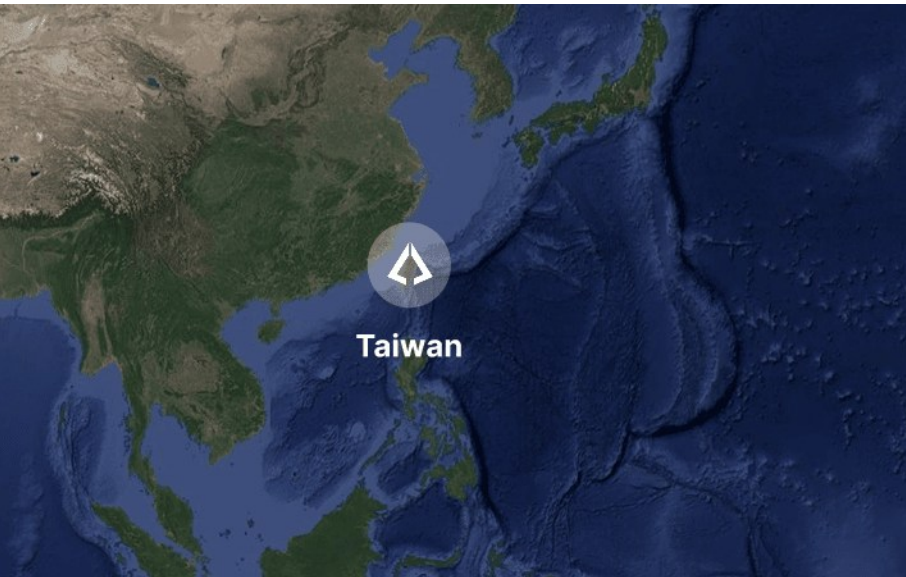
Taiwan



## Project:

O&M of 6 LM2500 Express G4 DLE & BOP Equipment

PRISMECS was awarded another longterm operations and maintenance (O&M) contract under a Master Service Agreement for a new power facility in Taiwan. The project includes six LM2500 Express G4 DLE units along with associated balance of plant (BOP) equipment.



## OUR SERVICES

- O&M contract administration and oversight
- Construction management and oversight
- Installation, testing, commissioning and O&M services
- Manpower Supply
- Engineer-procure-construct (EPC) specification preparation



MIDDLE EAST

# DUQM POWER STATION

## Location:

Duqm, Oman



## Project:

110 MW power generation facility

Oman is the site of a long-term operations and maintenance (O&M) contract where PRISMECS provides manpower, parts management, supply of parts, tools, consumables, project insurance, and necessary equipment



## OUR SERVICES

- O&M contract administration and oversight
- Construction management and oversight
- Installation, testing, commissioning and O&M services
- Owner's engineering
- Engineer-procure-construct (EPC) specification preparation



AFRICA

# LUBANGO POWER STATION

## Location:

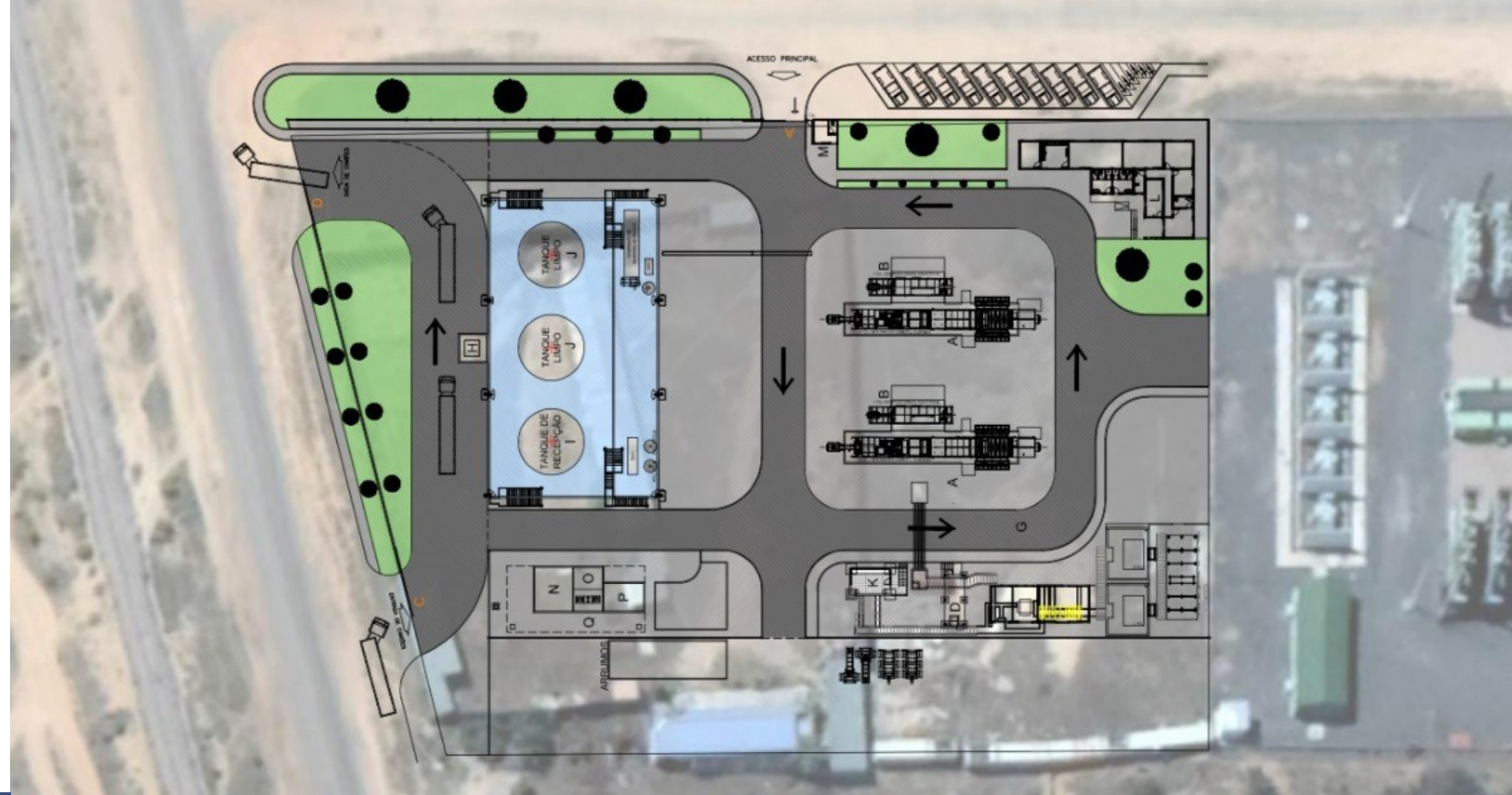
Angola



## Project:

56 MW expansion to existing power generation facility

When the Lubango Power Station needed to expand its power generation capacity, it partnered with PRISMECS for turnkey EPC services. To supply an additional 56 MW to the local grid, we designed a solution featuring two mobile gas turbines, two step-up transformers, and complete balance of plant (BOP) equipment.



## OUR SERVICES

- EPC contract administration and oversight
- Construction management and oversight
- Installation, testing, commissioning and O&M services
- Owner's engineering
- Engineer-procure-construct (EPC) specification preparation
- Design review

AFRICA

# CENTRAL DE BELEM HUAMBO

## Location:

Huambo, Angola



## Project:

50MW thermal electric generating facility

The Central De Belem Huambo is a 50 MW thermal power generation facility located in the Huambo province of Angola. Each of the facility's two mobile gas turbine units generates 25 MW of power. To support the successful execution of the project, PRISMECS delivered a comprehensive suite of EPC services.



## OUR SERVICES

- Engineering design of all equipment, plant systems and plant facilities
- Project management, site construction management, and quality control and safety management
- Equipment and construction subcontract procurement
- Commissioning, startup and O&M services



AFRICA

# CENTRAL DE MENONGUE

## Location:

Menongue, Angola



## Project:

56 MW dual fuel generation facility

When the City of Menongue needed to increase its capacity for reliable power, PRISMECS provided a turnkey solution.



## OUR SERVICES

- Engineering
- Procurement
- Construction
- Startup and commissioning